

2. GOVERNANCE, ORGANIZATIONAL STRUCTURE AND WORKING PHILOSOPHY

2.1 Governance and Organizational Structure

The Institute is an autonomous organization, run by the “National Institute of Technical Teachers’ Training and Research, Bhopal Society” and is registered with Madhya Pradesh Society’s Registration Act No. 44, 1973. The Board of Governors manages the Institute and is responsible for the general supervision, direction and control of the business of the Institute. The Board of Governors has representation from different stakeholders like technical education system, industry, society and the government. The Chairman of the Board of Governors is nominated by the Government of India for a period of five years. The Director of the Institute is the Chief Executive and also ex-officio Secretary of the Society and the Board of Governors. The affairs of the Institute are carried out as per the Memorandum of Association and Rules and Regulations of the NITTTR Bhopal Society.

The Union government has set up a council headed by the HRD Minister for better coordination among the four units of the National Institute of Technical Teachers’ Training and Research in October 2013. The Council shall be chaired by the HRD Minister with chairman and directors of the four NITTTRs and other academicians as members. The Council has been envisaged as an advisory body to the Central government on matters relating to central policies, administration, development of plans and rules, curriculum and institutional resources for the NITTTRs.

The working through this organizational structure (Figure: 2) is based on task force and project team-based operational structure (Figure: 1). the structure is responsive and flexible enough to meet various changing demands of the clients and to maintain dynamism within itself for its growth and development. It is sensitive to the needs of the technical education system, technological developments in the industries and socio-economic development of the society.

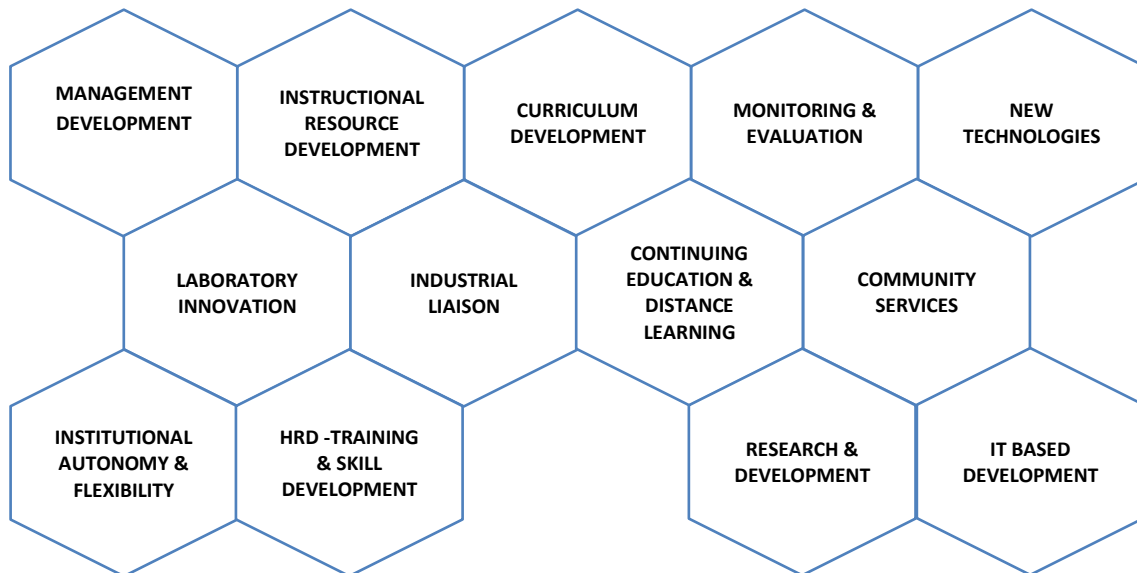


FIGURE 2.1: OPERATIONAL STRUCTURE

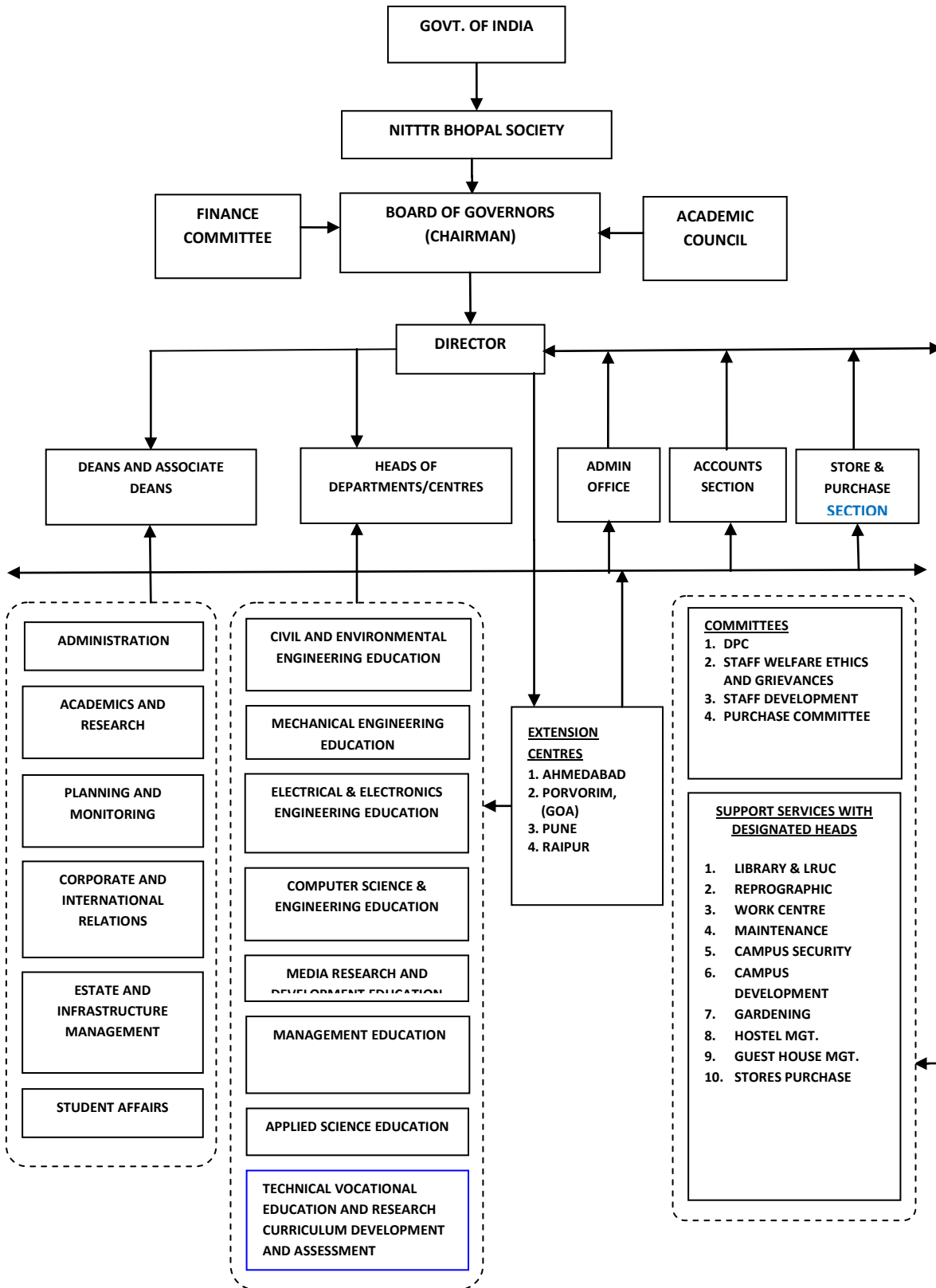


FIGURE 2.2: ORGANIZATIONAL STRUCTURE